



The Epiphany Star

June 17, 2009

Our Mission

The Episcopal Church of the Epiphany is an inclusive community called to seek and follow Jesus Christ. We welcome all people in the Eucharistic fellowship of Christ's Body. We receive strength and encouragement at the common table to carry out Christ's work of reconciliation in our broken world. Nourished by worship and witness, learning and teaching,

Where we are

I was on a hike in the Mountains of New Hampshire. My hiking partner and I had gotten lost, we wandered off trail (the markers were less than clear) and found ourselves on a steep mountainside, strewn with larger boulders and covered in vegetation. I had just consulted the map and had no clue about how we had gotten lost.

So, we set a new course. I had seen the map, knew that if we just walked in a northeasterly direction, that eventually we would have to cross the trail. At least I had great faith that that would be so. And, I had a map and a compass. It felt a little liberating and adventurous, despite our fear.

So we set off, and after several anxious minutes, that seemed like hours, we stepped out of the thick growth and right onto the trail. It was miraculous, or so it seemed. Really it just had to do with being ready, being prepared, trusting in the tools (map and compass) and continuing to put one foot in front of the other despite our fear and anxiety. As the song goes we found ourselves in the place just right...

So here we are wandering around in the woods of a church that has grown exponentially, added program, cost, income, changed staff, made a transition. Here we are wandering around wondering where we go, wondering if we will find ourselves in a place just right.

It might feel a little frightening. It might feel like something is lost. It might feel like we don't know where we are going. It might feel a little liberating and adventurous despite our fear.

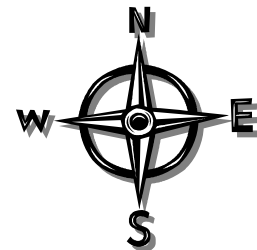
We have a map. We have a compass. Here is what they are at Epiphany. The map is our gathering to worship and see and apprehend God in our midst. The compass is the direction that that takes us, which is to continue to be open, risking, adventurous, faithful, honest, and brave people. We will be faithful people; I have learned that from you. We will be open people; I have seen that in you.

Right now we need to tend to our folks that are hurting economically, and consequently we need to tend how that impacts our budget. Just a big boulder in the way of our journey institutionally that will not keep us from going where we are headed. But it does mean we will need to be diligent in our spending. It also means that you need to be diligent in your giving, a sign, a compass point that leads you in the direction of faithfulness. It is also a sign that points to how we are keeping the faith, being brave, resting confidently that as we give we are doing so for our souls health, for the work of the church, for the people that come into my office every day and wonder if they can make the journey with us.

We are not lost at all. We are in that place just right. We are walking with great faith on a path in east atlanta where we proclaim the good news of God in Jesus Christ to be that all are welcome at our table, in our outreach, in our work to praise God, learn our stories, and share the journey.

Peace,

The Rev. Benno D. Pattison, Rector



Parish News

Summer Brown Bag Theology

This summer on Wednesday evenings we will have a theological brown-bag dinner discussion and general orthodox heretical fun time discussing such tantalizing topics as Theodicy-God and Evil, A Sacramental Life-a discussion of seeing the substance of creation, our very lives as an outward sign of the presence of God, and Opening the Canon of Scripture-if you could choose, what books, poems, essays, hymns, philosophical tomes would you include in the canon of scripture and what would you throw out.

On June 10, 17, 24, July 8, 15, and 22 we will gather at 6:30 in the Parish Hall. Bring a brown-bag dinner and your most inquisitive self. The group might change what direction we go in and that too will be fair game. Join us. Look forward to seeing you all.



Jumble Sale July 11

Scour your house and garage now for items to donate to the Epiphany Jumble Sale, benefiting our J2A pilgrimage fund! We will be accepting donations in the Parish Hall beginning Sunday, June 28. The deadline for all donations to be delivered is Monday, July 6. Remember, it's an ABC Sale—Anything But Clothes!

The sale is Saturday, July 11, from 9 a.m. – 2 p.m. The Preview Party, for parishioners and their guests only, will be Friday, July 10, at 7:30 p.m. (\$5 per person). Please donate what you can, and shop till you drop!

Thank You

Sara Nally and Jim Goodmann wish to gratefully acknowledge and thank those in Pastoral Care and other parish members who provided meals, prayers and support and other acts of loving-kindness throughout Sara's treatment. We both, more than ever, recognized the power of prayer and a loving community during this time. Thanks!

Epiphany Stars

Have you or another parishioner you know done a good deed for the parish? Do you know someone who has received recognition for a personal achievement? Let us know!

- Long-time Epiphanyite Tom Mundy, who has just retired from his *last volunteer role* at Epiphany, usher. Tom has been an usher since 1980. This past spring, Tom retired from heading up the FSM group which sent out our newsletter for bulk mail, which he did for 25 years. In addition, Tom took flowers to shut-ins, managed the tract rack of materials in the gallery and served as a choir member (1952-1980). Tom was also our historian, accumulating photos and documents (now archived in the office) and writing two editions of the history of Epiphany covering more than ninety years.

- Our former Rector, the Rev. Claiborne Jones, now vicar and director of Emmaus House, along with The Rev. Camille Hegg, celebrated on June 12 the 30th anniversary of their ordinations to the priesthood by the late Bishop Bennett J. Sims. They were the second and third women in the Diocese of Atlanta to be ordained priests; the first was the late Eloise Lester. Claiborne was the first female rector in the diocese when she came to Epiphany in the 1980s.

You're invited to a ...

Newcomers' Cookout

All newcomers to Epiphany are invited to join us for a cookout in the Parish Hall.

Welcoming members are invited to come and bring side dishes and/or dessert.

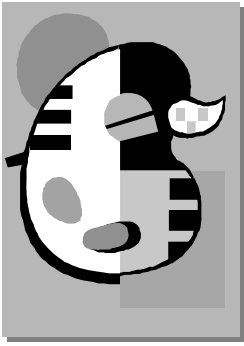
Sign up in the Crossing Hall or RSVP to the church.

Child care will be provided.



Sunday, June 21
5:30 p.m.
Parish Hall

RSVP to the Church at info@epiphany.org or 404.373.8338 by Thursday, June 18.



Epiphany's Art Ministry welcomes Different Strokes for June

Different Strokes (in their words)

We are a group of 6 artists from 4 generations who enjoy painting together. Our mentor, Elsie Dresch, the prolific and wise 84-year-old artist, hosts all of us in her studio on Fridays. Our ages range from 50's to 80's. Our mediums are as varied as the subjects we paint and include watercolor, oil, pastel, and acrylic. All of us at one time studied with Elsie. What binds us is our shared

enthusiasm about art, our dynamic synergy with help and feedback for each others' work, and especially the intermittent pearls of wisdom about life and art from Elsie. The studio is filled with laughter in balance with focused attention to our work.

The day starts about 11:30 a.m.; we paint for about 1.5 hours and then share a smorgasbord of food and conversation. We return to the easels and work until about 3:30 or 4:00 p.m. Our styles and approach are quite varied and create an astounding and interesting atmosphere. This is the first time we have exhibited together.

Information about the artists follows:

Janet Bode: A pastel artist who enjoys painting boldly colored landscapes from her travels. She had never painted before meeting Elsie Dresch. Although she has donated and sold several pieces in Massachusetts at Truro Center for the Arts Castle Hill, this is her first exhibition.

Carol Clark: A watercolor artist who loves to paint landscapes from her hiking experiences, portraits of friends and family, as well as abstracts. Carol has exhibited locally. Carol has an Art Education degree, and did layouts and illustration (mostly fashion illustration) for 11 years. After painting in oils, acrylics, and pastels in her early years of painting, she is now concentrating on watercolors. In Carol's words, "To me, it is a challenging, but extremely exciting medium to work in".

Elsie Dresch: Our leader paints in oil, pastel and, occasionally, acrylic. Elsie paints primarily landscapes but also portraits and abstracts. In addition to being represented by several galleries in the Southeast, including Watson Gallery on 14th Street, she teaches workshops and private lessons. Her wonderful art book "Create Better Paintings, Working with Pastels" is available for anyone who is interested.

Diane DiPaola Hunt: A pastel and oil artist, she loves painting landscapes. She has been working steadily since 2004. Diane's art is inspired by her exciting travels abroad. Diane has sold numerous paintings and exhibited locally. She loves painting every Friday with the Different Strokes group and is motivated and inspired by all.

Donna Parker: A pastel artist who loves to paint charming primitive subjects and simplified figures. Her favorites include barns and informal portraits of family and friends. This is her first exhibition.

Liefje Smith: An acrylic artist who works primarily on large energetic abstracts but also enjoys landscapes and still lifes. Liefje is a member of Epiphany and her work is represented by two Atlanta galleries, Bobbe Gillis Gallery and Regency House. This summer her work is exhibited in a one-person show at Quinlan Visual Arts Center in Gainesville.

DEAM Update

We have two weeks to go on our semi-annual food drive for Decatur-area Emergency Assistance Ministry (DEAM). Our goal is 175 of each of the listed items. Our current standing for items are: 1 lb. packages thin spaghetti (44 so far), spaghetti sauce (29), cereal (33) and jelly (37).



Please bring more items for the basket in the gallery. Thank you.

Transitions

Please make the following changes and/or additions to your parish directory and welcome our new members.

Up-to-date parish directories are available from the office by request (parishadmin@epiphany.org).

If you would like to transfer your membership to Epiphany, you may pick up a Transfer Request form in the gallery, or send your date of birth and any dates of baptism or confirmation, along with the name and address of your previous church home, to the parish office.

Transfers In

Caroline D'Huyvetter
843.860.5560
2332 Nesbitt Drive
Atlanta, GA 30319
from *The Episcopal Church of St. Peter & St. Paul, Marietta, GA*

Cindy & Tom Bell,
404.549.3363
342 W. Parkwood Rd.
Decatur, GA 30030
from *Emmanuel Episcopal Church, Hampton, VA*

July Birthdays

1 Elliot Saltmarsh	9 Erin Democko	15 Maggi Ewing	22 David Knope
1 Brian Sprinkle	9 Liz Romo-Rasha	16 Bobbie Campbell	22 Carter Peatman
2 Joe Patterson	9 Ellen Wojcik	16 Susan Crooks	23 George Council
2 Amy Roth	10 Mary Lou Bassett	16 Sophia Wheaton	23 Bruce Grant
2 Hannah Shew	10 Ian Green	17 Ross Democko	23 Walt Lowe
4 Adrianna Corcoran	10 Dylan Grendzinski	17 Lydia Ogden	23 Lily McCord
4 James Rowles	10 Katie Teel	18 Brendan Wiseman	23 Larry Nodine
4 Nancy Strauss	11 Andrew Jubera	19 Laurie Cass	24 Gabriella Deocampo
4 Craig Ryder	11 Muriel Knope	19 Trevor Graetz	24 Yoana Ismail
5 Larry Kilday	12 Andrea Strahan	19 Mimi Kiser	25 Diane Wilkey
5 Sam Fisher	13 Miriam Browne	19 Todd Smith	28 Brooke Schaal
6 Lia Bertelson	13 Wallace Bryan-McGrath	20 Mary McKenzie	29 Irene Browne
6 Katrina Shoemaker	13 Lisa Carlson	20 Scott Yaegle	30 Luke Pattison
6 Max Nodine	13 Alex Costello	21 Dorothy Gautier	30 Nancy Thompson
6 Anna Pepper	13 Caroline D'Huyvetter	21 Jessica Moody	30 Kalynn Wilczynski
7 Alixe Davidson	13 Kate Hall-Shalvoy	21 Daryl Schaal	31 Josie Seebode
7 Rob Godsall	13 Miriam Koons	22 Josh Becker	

July Anniversaries

1 Barbara & Howard Fisher	11 Gail O'Day & Tom Frank	27 Audrey & Neil Banfield
1 Donna & Doug Whitehead	11 Kelly & Alan Cowart	27 Michele & Rod MacLeod, Jr.
2 Andrea Carpenter & Dennis Edmiston	11 Barbara & Craig Ryder	29 Leslie Jo Tottenham & Chris McGraw
6 Leah & Tom Felcher	19 Aaron & Hilary Stimart	30 Lynn & Quentin Holden
7 Susan & Kirk Lalor	20 Wallace Bryan-McGrath & Jeff McGrath	30 Barbara & Joe Patterson
7 Elena & Tad Braswell, Jr.	20 Laura & Jeff Thomas	
	26 Mary & Bill Braswell	

The Epiphany Star

a word to the wise...

...is a bi-weekly publication of The Episcopal Church of the Epiphany. Articles compiled and edited by the Parish Administrator, Shea McNutt. Submissions accepted via mail, fax, e-mail or hand-delivery.

Deadline for the next issue is 5 p.m.,
Thursday, June 25

Office Hours

Mon. - Thur. 9 a.m. - 5 p.m.
Friday 9 a.m. - 12 p.m.

Website

www.epiphany.org

E-mail

info@epiphany.org

Telephone

404.373.8338

♻️ printed on recycled paper

Full-time Parish Staff

The Rev. Benno D. Pattison, *Rector*
rector@epiphany.org

The Rev. Cynthia Hizer, *Associate Rector*
associate@epiphany.org

Jamie Shiell, *Organist & Choir Master*
music@epiphany.org

L. Shea McNutt, *Parish Administrator*
parishadmin@epiphany.org

Br. Aelred Dean, *Sexton*
sexton@epiphany.org

Part-time, Placements & Affiliations

The Rev. Barbara Ryder, *Assisting Priest (Ret.)*
bhwyder@bellsouth.net

The Rev. Dennis Smart, *Assisting Priest (Ret.)*
john.smart@comcast.net

Terry Howell, *Vocational Deacon*
thowell@fieldshowell.com

Cynthia Montooth, *Vocational Deacon*
chmontooth@earthlink.net

Malikah Sabir, *Childcare Worker*

Jean Livingston, *Childcare Worker*

2009 Vestry

Lisa Daily, Sr. *Warden*
Cecilia Democko, *Christian Ed.*
Muriel Diguette, *Outreach*
David Draper, *Ex-Officio*
Colleen Flood, *Pastoral Care*
Brent Henderson, *Music*
Mike McAuliffe, *Properties*
Polly Nodine, *Parish Life*
Kathleen Rinehart, *Pastoral Care*
Mark Rowles, *Parish Life*
Eric Schulz, *Stewardship*
Dave Thompson, *Christian Ed.*
Rick Timmer, *Finance*
Janet Wilson, *Treasurer ex-officio*

Worship Schedule—Sunday

8:45 a.m. - Holy Eucharist
11:15 a.m. - Holy Eucharist
6 p.m. - Holy Eucharist

Worship Schedule—Weekdays

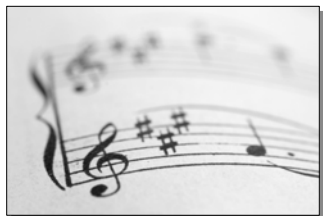
Tuesday at 7 a.m. - Holy Eucharist & Morning
Prayer alternating weeks
Wednesday at 12:15 p.m. - Holy Eucharist with
Healing Rite
Friday at 8:15 a.m. - Morning Prayer

The Episcopal Church of the Epiphany

JULY 2009

Sunday	Monday	Tuesday	Wednesday	Thursday	Friday	Saturday
			1 12:15 p.m. Eucharist with Healing (CH) 1:00 p.m. Bible Study (PH-C)	2 <i>Newsletter Published</i> 6:00 p.m. Ed. For Ministry (201)	3 Office Closed	4 Independence Day 10:00 a.m. Altar Guild I
5 Pentecost 8:45 a.m. Holy Eucharist 9:30 a.m. Summer Breakfast 11:15 a.m. Holy Eucharist 4:30 p.m. Centering Prayer (201) 6:00 p.m. Holy Eucharist	5 12:15 p.m. Staff (201) 6:00 p.m. Centering Prayer (CH) Jumble Sale Set up	6 7:00 a.m. Morning Prayer 7:30 a.m. Men's Breakfast (KT) 10:00 a.m. *Little Song Birds (PH) 11:00 a.m. *K. Yntema (201) 7:00 p.m. Fin. Comm. (201)	7 12:15 p.m. Eucharist with Healing (CH) 1:00 p.m. Bible Study (PH-C) 6:30 p.m. Brown Bag Theology (PH-C) [Johnson Wedding]	8 <i>Newsletter Deadline</i> 6:00 p.m. Ed. For Ministry (201)	9 8:15 a.m. Morning Prayer (CH) 7:30 p.m. Jumble Sale Preview Party	10 9a – 2 p.m. Jumble Sale (MS) 10:00 a.m. Altar Guild II 10:00 a.m. Daughters of the King (201)
6 Pentecost 8:45 a.m. Holy Eucharist 9:30 a.m. Summer Breakfast 11:15 a.m. Holy Eucharist 1:00 p.m. *Veterans Heart of Ga. 4:30 p.m. Centering Prayer (201) 6:00 p.m. Holy Eucharist	12 12:15 p.m. Staff (201) 6:00 p.m. Centering Prayer (CH)	13 7:00 a.m. Holy Eucharist 7:30 a.m. Men's Breakfast (KT)	14 12:15 p.m. Eucharist with Healing (CH) 1:00 p.m. Bible Study (PH-C) 6:30 p.m. Brown Bag Theology (PH-C)	15 <i>Newsletter Published</i> 2:00 p.m. Prep & Cook P'tree Pine Shelter Dinner (KT/PH) 6:00 p.m. Ed. For Ministry (201)	16 8:15 a.m. Morning Prayer (CH) 2:00 p.m. Heat up P'tree Pine Shelter Dinner (KT/PH) 5:00 p.m. Deliver & Serve Meal (P'tree Pine Shelter) 7:30 p.m. P'tree Pine Volunteer Dinner (PH-A)	17 10:00 a.m. Altar Guild III
7 Pentecost 8:45 a.m. Holy Eucharist 9:30 a.m. Summer Breakfast 11:15 a.m. Holy Eucharist 4:30 p.m. Centering Prayer (201) 6:00 p.m. Holy Eucharist	19 12:15 p.m. Staff (201) 6:00 p.m. Centering Prayer (CH) 7:00 p.m. Vestry (KT/PH) 7:30 p.m. *Book Club (Regency)	20 7:00 a.m. Morning Prayer 7:30 a.m. Men's Breakfast (KT) 10:00 a.m. *Little Song Birds (PH)	21 St. Mary Magdalene 12:15 p.m. Eucharist with Healing (CH) 1:00 p.m. Bible Study (PH-C) 6:30 p.m. J2A (201) 6:30 p.m. Brown Bag Theology (PH-C)	22 <i>Newsletter Deadline</i> 6:00 p.m. Ed. For Ministry (201) YAC Trip	23 8:15 a.m. Morning Prayer (CH)	24 St. James 10:00 a.m. Altar Guild IV 9a - 4p Vestry Retreat (Daily)
8 Pentecost 8:45 a.m. Holy Eucharist 9:30 a.m. Summer Breakfast 11:15 a.m. Holy Eucharist 1:00 p.m. *Veterans Heart of Ga. 4:30 p.m. Centering Prayer (201) 6:00 p.m. Holy Eucharist	26 12:15 p.m. Staff (201) 6:00 p.m. Centering Prayer (CH)	27 7:00 a.m. Holy Eucharist 7:30 a.m. Men's Breakfast (KT) 10:00 a.m. *Little Song Birds (PH)	28 12:15 p.m. Eucharist with Healing (CH) 1:00 p.m. Bible Study (PH-C)	29 <i>Newsletter Published</i>	30 8:15 a.m. Morning Prayer (CH) 5:00 p.m. Wedding Rehearsal	31 LEGEND CH = Church KT = Kitchen MS = Music Suite PH = Parish Hall * = Outside Group or Private Function

Music Ministries



The Epiphany Choir Year in Review

By Michele MacLeod

You may have noticed some changes, a lot of growth and a very positive vibe coming from the Epiphany Choir loft during our 2008 - 2009 season. We've never been bigger or busier than we were last year!

We kicked off the 2008 - 2009 season with our First Annual Epiphany Choir Retreat at Camp Mikell in early August. We worked really hard rehearsing tons of new music. There was a whole lot of singing going on that weekend! We also had the opportunity to become a more cohesive group after the move from two separate choirs into one large Epiphany Choir. And, bond we did! It was a truly awesome weekend! We are grateful to the Parish for supporting our bake sales and Courtyard Cafés throughout the year. That helped defray some of the cost of the retreat. Look for more fundraising events in the future! (Our Second Annual Epiphany Choir Retreat is rapidly approaching!)

During last season, the Epiphany Choir sang at over 80 Sunday morning worship services at Epiphany. Additionally, we sang at Evensong, Lessons & Carols, an ordination, two funerals and Annual Council. We were also invited to sing at Evensong services at the Cathedral of St. Philip and St. Dunstan's. Advent, Christmas and Epiphany were very busy seasons for us with an incredible amount of music to be learned and sung. Things did not slow down much during Lent as we prepared for Holy Week and Easter.

On a sad note, we lost our long-time music librarian and beloved Epiphany Choir member, Mary Betty Ford, to cancer this year. She is remembered and greatly missed by all. I will especially miss her since I have volunteered to take on the duties of music librarian!

In addition to our love for music, Epiphany Choir members are also committed to many other programs and groups within our parish, including Vestry, Christian Education, Pastoral Care, Altar Guild, etc. We feel blessed to be a part of such a wonderful church community and hope that we can in turn offer a blessing to you through our music.

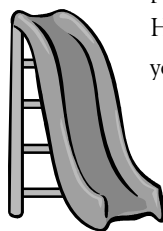
Because of our busy rehearsal and performance schedule during the season past and in anticipation of the hard work to come in the 2009 - 2010 season, Jamie has given us the month of June off! So, many of us will be sitting in the congregation on Sunday mornings listening out for your beautiful voices. Don't be surprised if a choir member taps you on the shoulder and asks you to join us!

If you think you might like to sing in the Epiphany Choir, we will be singing again starting July 19 with rehearsals one hour prior to each service (you only need to sing at one service). My husband and I started singing in the Choir during the summer several years ago and just never left! Summer Choir is a great way to see if this Ministry is one for you. Please contact Jamie Shiell, Organist/Choirmaster, at 404.373.8338, e-mail: music@epiphany.org or Amy Shipp, Choir Council President at 404.892.4320, e-mail: amyrshipp@gmail.com or any member of the Epiphany Choir for more information.

Children's Ministries

Vacation Bible Camp Summer Breakfast & Art Show

Campers from Vacation Bible Camp will sing during the offertory, and parents will sponsor breakfast between services on Sunday, June 28. In the Gallery, look for the display of Campers art: bug huts, fairy houses, trash art, water colorings and hoisted high above our heads - prayer flags filled with prayers for creation. And join in discovering more bug huts and fairy houses in gardens outside.



Young Families Potluck

The Young Families group meets monthly at 4:30 p.m. on the playground followed by a casual potluck dinner in the Parish Hall. Below are the dates for the remaining potlucks. We hope you will mark your calendars and join us for a fun gathering.

July - off	September 22	November 17
August 25	October 20	December - off

For Our Prayers...

Prayer intentions for *The Epiphany Star* and for Sunday Services should be directed to either of the clergy at 404.373.8338. In case of emergency you may contact them via cell phone: The Rev. Benno D. Pattison (404.538.9089), or The Rev. Cynthia Hizer (770.891.8216). Please let the Parish Office know if there are any errors on the listings below.

Heal your sick servants

- Amy Alderson
- Tom Fountain
- Alma Fuller
- Luise Kirkhuff
- Susan Smart
- Donna Whitehead
- Laura Thomas
- Julia Mathias, cousin of Sarah Jane Wollison

Rest eternal grant them

- Lillian Dyer, sister of Alma Fuller
- Gus Douvanis, friend of Cher Hendricks and family

Parishioners who desire our continuing prayers

- Betty Dangerfield
- Keith Fox
- Dorothy Gautier
- Carmen Gutierrez
- Sharon Hiers
- Mary Lee
- Joey Saavedra
- Karen Swenson
- Ted Yardley
- Katharine Yntema

Those in prison

- David, Gene, Christopher, Chris, John, Mark and Trey

Those in the armed forces

- Anthony Baggs, Layton Lane Britt, Eddie Chowning, Kevin Cunningham, Kevin Doonan, Nicky Dykes, Brett Jackson, Eli Jordan, Shade Lawson, Richard Mann, Stewart Mundy, James Neff, Scott Owens, MacLeod Patton, Philip So, Marc Steele, John Thornburg, Chris Will

Family and friends who request our prayers

- Evejean Clarke, friend of Roberta Williams
- Leah Aronowitz, friend of Kathy Walmsley
- Bruce Daily, brother of Lisa Daily
- Rebecca Miller, wife of James Miller
- Peggy Richmond, sister of Bill Graves
- Richard Mann, father of Kristin Mann
- Kate McCary, aunt of Karen Swenson
- Mike Daily, father of Lisa Daily
- Clyde Fox, father of Keith Fox

- Joseph Saavedra, father of Joey Saavedra
- Beth, sister of Chris Miller
- Mary Clare Hogg, aunt of Liefy Smith
- Ruth Battersby, friend of Carmen Gutierrez
- Scott Morris, son of Jean Morris
- Billie Ledbetter, mother of Gail Munoz
- Ernie Gregory, friend of Terry Howell
- Jane Magruder, friend of Karen Swenson
- Gina Llewellyn, friend of Noelle Toumey Reetz
- Fay & Mel Davis, mother & step-father to Sara Hauk
- Jean Sengle, aunt of Brenda Lloyd
- The Voss family, relatives of Sarah McLean and Christen Erskine
- Betty Porter, relative of Sarah McLean and Christen Erskine
- Marion Barber, friend of Sarah Jane Wollison
- Sr. Mary Elizabeth, SSG, friend of Br. Aelred
- Debby Mugridge, family of Audrey Banfield
- Sally Hall, friend of Wister Cook
- Abby Knapp, grandniece of Doug Runion
- Esther Ojo, friend of Tracey Laird
- Taylor Thorell, friend of the Branch Family
- Susie Giradeau, friend of Fran Holt Martha Adhikan, sister of Monica Baroi
- Alice MacLeod, sister of Rod MacLeod
- Madison Isabella, daughter of Fran Holt
- Anne Braxton Smith, granddaughter of Pam & Mike Smith
- Bill Bennett, son-in-law of Michele & Rod MacLeod
- Robert Holt, son of Fran Holt
- Diep Shoemaker, daughter-in-law of Katrina Shoemaker
- Chuck Underwood, brother of John Underwood
- Bobby Crenshaw and Catharine Crenshaw McCary, uncle and aunt of Karen Swenson
- Murphy Davis and Eduard Loring, friends of Br. Aelred
- Nicholas Hokanson, son of Marjorie & Rick Timmer
- Don Boyd, father of Jerry Boyd
- Allison, sister of Sandy Land
- Walter Buehler, father of Jim Buehler
- Walter Marx, friend of Kathy Walmsley
- Paul Dean, father of Dylan Dean
- Chris Belcore, brother of Barbara Belcore
- McKenzie & Sydney, nieces of Barbara Belcore
- Gail Peterson, uncle of Lisa Carlson
- Thad Crowe, brother of Lisa Crowe
- Linda Brigner, sister of Judy Urban
- Barbara Hoshley, friend of Marilyn Cook
- Barbara Stinson, friend of Pamela & Michael Smith
- Nancy Davis, Nancy Easland, Oliver Thorold & Julie Hillyer, friends of Kristin Mann
- Megan & Jason and Olivia Cheek, friends of James & Gretchen Cobb
- Christy & Keith, relatives of Kristina Watkins-Mormino
- Cindy Afforder, friend of Lissa Jackson
- Bess Hinson, niece of Patricia Edelkind
- Charles King, father of Allen King
- David Mundy, grandson of Cynthia & Gene Montooth
- Tommie, sister of Maggie Ewing
- Ruth, friend of Beth Haines
- Stephanie Gokey, friend of Karen Swenson
- Barbara, friend of Pamela & Mike Smith
- Edward Carr, grandfather of Travis Carr
- Lynne D'Huyvetter, mother of Caroline & Gretchen D'Huyvetter
- Br. Robert James, Gregorian brother of Br. Aelred Dean
- Trellis Anderson, student of Fran Holt
- Nicole & Tyler Burton, children of Lisa Burton
- Jan, sister of Shirley Sugden
- Marcia McCown, friend of Susan Lalor
- Judy Mitchell, wife of Mike and friend of Liz Schellingerhoudt
- Mike Wilson, father of Shelle Bryant
- Margaret Burrell, friend of Kathy Walmsley
- Tommie, sister of Maggie Ewing
- Jim Phillips, father of Esther Harbert
- Peter Sells, nephew of Craig & Barbara Ryder
- Mike Wilson, father of Shelle Bryant
- Jerry Fico, son of Grace Fico
- Arthur Monk, father of Bill Monk
- Carol Martinez, father of Marjorie & Rick Timmer
- Gloria Wanner, mother of Deanna Wheaton
- Jim Haswell, friend of Cynthia Hizer
- Brian Lowring, friend of the McCord family
- Carolyn Place, mother of Julie Lockhart
- Duane Stephenson & Brett Bennett, cousins of Esther Harbert
- Miriam Reid, mother of Cynthia Hizer
- Marnie Hotz, sister-in-law of Barbara Hotz
- Alice Macleod Folsom, sister of Rod MacLeod
- Mike Daily, father of Lisa Daily

The Episcopal Church of the Epiphany
2089 Ponce de Leon Ave., NE
Atlanta, GA 30307

Change Service Request

People & Posts

June 21

Acolytes: TBA

Altar Guild: Keith Poole, Annie Strahan, Kathleen Rinehart

Eucharist Visitor(s): None Scheduled

Flower Guild: Stephanie Brown

Layreaders & LEMs: 8:45 - Matt Bolch, Marilyn Richtarik, Marjorie Timmer, Tom Democko, Cecilia Democko, Rick Timmer; 11:15 - Shirley Banks, Nancy McCord, Nisa Sommers, Bob Thompson; 6 - Paul Holbrook

Nursery: Jeanette Hanson

Ushers: 8:45 - Anne Warner, John Pierson, Ray Quinnelly, Beverly Burks; 11:15 - Randy Strahan, Annie Strahan, Mike Binford, Nancy Binford

Verger of the Day: Doug Runnion

Vestry Person of the Day: Muriel Diguette

Second Teller: Ben Jordan

June 28

Acolytes: TBA

Altar Guild: Jerry Boyd, Ann Fowler, Anne Warner, Fran Holt

Eucharist Visitor(s): None Scheduled

Flower Guild: Anne Warner

Layreaders & LEMs: 8:45 - Phil Bolton, Todd Smith, Susan Lalor, Cliff Edge, John Yntema, Rob Godsall; 11:15 - Kathy Walmsley, Heather Knapp, Bob Kirkhuff, Dan Mundy, Sara Nally; 6 - Mary McKenzie

Nursery: Maggi Ewing

Ushers: 8:45 - Philip Anderson, Sabra Hanson, John Howarth; 11:15 - Audrey Banfield, Neil Banfield, Charles Coats, Liz Romo-Rasha

Verger of the Day: Diane Mundy

Vestry Person of the Day: Kathleen Rinehart

Second Teller: Richard Messner