

# ANNUAL REPORT 2026



THE EPISCOPAL CHURCH OF THE EPIPHANY  
2089 Ponce de Leon Ave., NE, Atlanta, GA 30307 | [epiphany.org](http://epiphany.org) | 404.373.8338

# ANNUAL PARISH MEETING AGENDA

Sunday, January 25, 2026

## Opening Prayer

O God of unchangeable power and eternal light: Look favorably on your whole Church, that wonderful and sacred mystery; by the effectual working of your providence, carry out in tranquility the plan of salvation; let the whole world see and know that things which were cast down are being raised up, and things which had grown old are being made new, and that all things are being brought to their perfection by him through whom all things were made, your Son Jesus Christ our Lord. *Amen.*

## Appointment of the Secretary

## Election of Vestry Members

## Introductions of Vestry and Staff

## Senior Warden's Report

## Stewardship Report

## Financial Report

## Rector's Report

## Benediction



## RECTOR

*The Rev. Amy Dills-Wright*

The Season of Epiphany characteristically focuses on light. And that's why with Epiphany as our namesake, you'll see stars and references to light all over our building. In the narthex outside the doors to the nave we say, "May Christ the Son of God be manifest to you that your lives may be a light to the world."

2025 was a difficult year for our nation so full of division and for many in our parish. Through it all we let the light of Christ guide us in how we cared for each other and how we cared for others beyond the walls of our church. As we grieved the suffering of people around us, we were still able to say "but also look at what God is doing in our world and in our midst."

Perhaps a good theme song for the year ahead will be "This little light of mine. I'm gonna let it shine." That's what I see you doing—serving as a light to the world and to others in this parish. You gave generously of your time and your resources to address food insecurity, to stand up for the vulnerable among us, to protect our precious earth through the installation of solar panels. There is more work to be done and I'm excited to see what God will continue to do in our midst and through you.

We have lots to celebrate within the parish from the past year. Through your generosity, we created the Enduring Light Operating Fund, in addition to our existing grant endowment. As it grows, it will provide additional budget income for future generations to get to experience what we have at Epiphany. We finalized a Preparedness Manual to keep us all safer and created a Staff Handbook to guide the way we serve together. We did a number of maintenance things around the church to care for our building and campus and grew our capital reserve to fund future maintenance needs of the church. We offered a workshop on Letting Go into Mystery about facing death and dying, and one on planning for your third act of life and beyond. We provided care to each other through the ministry of Community of Hope, added new members through the care of our Newcomer ministry, and shared many wonderful meals through the ministry of our Parish

Life committee. We offered a contemplative practice group and a contemplative book group for those who connect with God in quieter, more reflective ways. We offered rich worship experiences through the ministry of our music program and worship guilds. One of the strengths of this place is the varied ways we have for people to find connection with God and with others in the community.

As we step onto the balcony and think about the broader health of the church moving forward, I want to thank you for investing in the staff of this parish. Your generosity allows us to employ some of the best in the diocese. Carmie, Julie, Shea, Taylor, Susie, and Jason serve you so well and I feel privileged to work with them. They help shape the kind of community that we all want to be part of. The time has come for us to begin thinking about a full-time staff person to serve our children, youth, and families. When we did the Congregational Assessment Tool several years ago, the parish named "make necessary changes to support families with children and youth" as one of our top priorities. To do that, we need a staff person who can devote more than 20 hours per week to building relationships with children and youth. I look forward to dreaming together about the possibilities.

Finally, I wanted to express my gratitude for the opportunity to take a sabbatical. In this diocese, our Letter of Agreement provides for a three-month sabbatical every six years for clergy. Last August was my sixth year and in talking with Carmie and the vestry and with their blessing, I've decided it works best for the church and for me to split it into six weeks this summer and six weeks next summer. I look forward to some time of spiritual renewal while I'm away and am grateful to those who make that possible.

I look forward to seeing all that God will do in and among us in the year to come. Thank you for all you do to make Epiphany the special place it is. "May Christ the Son of God be manifest to you that your lives may be a light to the world." Amen.

May Christ the Son of God  
be manifest in you that your lives may be  
a light to the world.

## ASSOCIATE RECTOR

*The Rev. Carmie McDonald*

In September 2025, The Rev. Amy Dills Wright and I gathered with more than 200 priests and deacons from the Diocese of Atlanta and the Diocese of Georgia for a joint Clergy Conference at Rock Eagle. It was the first time all of the clergy from our two dioceses had met together in decades and we were fortunate to be joined by the Presiding Bishop of the Episcopal Church, The Most Rev. Sean Rowe, Bishop Rob Wright of Atlanta, and Bishop Frank Logue of Georgia.

We were a diverse group in many ways—some served rural parishes while others were in urban centers, some were conservative and others were liberal, some were born and raised in Georgia while others moved here from different countries. We agreed on some things and disagreed on others. But we were bound together as the Body of Christ and through our shared calling to spread the good news of God’s love in a hurting world. And no matter our geographic or social locations, we all agreed on one thing: 2025 was a year characterized by change that impacted our institutions, our parishes, and our personal lives, and left many of us wondering how to respond.

In one of the conference’s joint sessions, Bishop Wright made clear that he did not have all the answers, but he did have one question. It was, he said, a guiding question—one that helped him discern what was his to do in times of uncertainty. “What does faithfulness to Jesus Christ look like in my life at this moment?” His question has stayed with me in the months since that conference, and as I reflect back over this last year at Epiphany, I recognize the many ways you have been living out the answers.

In the face of a changing social support network, Epiphany parishioners demonstrated their faithfulness to Christ in ways large and small. Our Social Justice Action Group participated in peaceful demonstration, advocating for policies that respect the dignity of every human being. Others shared their time and resources by preparing and delivering food to the hungry or supporting DEAM with donations. Our Epiphany Vestry voted to give 25% of a \$40,000 bequest to combat food insecurity in our community, over and above our annual contributions to DEAM and other charitable organizations.

In the face of a rapidly changing climate, this Epiphany community demonstrated our faithfulness to Christ by crowdfunding a solar energy installation that bears witness to God’s goodness in creation and to our commitment to caring for those most affected by climate change.

In the face of increasing social isolation, you all have demonstrated your faithfulness to Christ by reaching out to and supporting others in all of life’s seasons. We’ve gathered to celebrate the Eucharist, pray, sing, listen, learn and reflect on our shared journey of faith. You’ve participated in worship and helped lead it, volunteered to teach formation, gathered in intergenerational groups, and invested in the lives of our youngest members.



At the end of our Clergy Conference last year, Bishop Wright added that in the face of the kinds of uncertainty and change we are facing, it is a good time to be the Church! Our hope is grounded in a God who is reliable—even when nothing else seems to be—and the opportunities for sharing the Good News are all around. So as we reflect on 2025 and anticipate all this new year will hold, I look forward to discerning with you what faithfulness to Jesus Christ looks like in the life of this community in these days.

## THE EPIPHANY STAFF

### Clergy



The Rev. Amy Dills-Wright  
*Rector*



The Rev. Carmie McDonald  
*Associate Rector*



Julie Ryder  
*Organist & Choirmaster*



Shea McNutt  
*Parish Administrator*

### Part Time Staff



Taylor Irwin  
*Director of Children & Youth Ministries*

not pictured

Susie Boyko  
*Bookkeeper*



Jason Sullivan  
*Facilities Manager*

### Assisting Priests



The Rev. Dr. Bobbi Patterson



The Rev. Barbara Ryder

## SENIOR WARDEN

Sally Walker

Whenever I reflect on Church of the Epiphany, the word that continually comes to mind is “blessed.” I feel truly blessed to have been led to this wonderful community and I am inspired everyday by Epiphany’s devoted parishioners. We are blessed with a talented staff that make this all possible and I am especially grateful to have Amy and Carmie whose presence here feels nothing short of divinely guided.

This passage from a prayer of blessing resonates with me as I reflect on 2025.

*And May God bless us with enough foolishness  
To believe that we can make a difference in this world,  
So that we can do what others claim cannot be done,  
To bring justice and kindness to all our children and the poor.*

*From A Franciscan Benediction, by Sister Ruth Marlene Fox, OSB,  
of Sacred Heart Monastery in Richardton, ND*

I am so blessed to be with all you parishioners here at Epiphany who share this “foolish” belief that together, we truly can make a difference in our community and this world.

In a time when small churches often face declining membership and financial hardship, we “foolishly” believed we could be different. Guided by our Rector’s expertise in accounting, we stand out as a parish on a solid foundation of support, both in membership and financially. We have a budget that not only meets all our financial commitments but also enables us to generously serve our community and plan for Epiphany’s future.

We “foolishly” thought we could create a comprehensive Preparedness Manual, to guide us in any emergency. Thanks to the many medically trained parishioners who contributed to its creation and volunteered to act as responders, this important resource is now complete.

We have believed “foolishly” that we could make a difference at DEAM, Holy Comforter, Gateway, Emmaus House and beyond. We have! We put our talents, love and resources in action supporting those in our community who are less fortunate or food insecure.

We were “foolish” enough to think we could put solar panels on our roof and raise \$50,000 for this project in a matter of weeks. We did it! With Carmie’s exceptional leadership as project manager, we achieved this goal and met the 2025 deadline to secure our tax break.

I want to thank my fellow Vestry members who dedicated their precious free time to make all our accomplishments in 2025 possible: Carol Bartlett, Cristin Davis, Jordan Moody, Kay Lee, Cody Chaffins, Kathy Corcoran, Jacob Geiger, Tracey Laird, and especially to our outgoing Vestry who have served for the last three years, Andrea Strahan, Matthew May and Judy Jarady. I also say thank you Kaylie Gibbs our past Senior Warden, Sherry Wallace, Clerk of the Vestry and Randy Shearin our Treasurer.

You may have heard the term “Stay Weird,” I encourage you to “Stay Foolish.” Foolishly believing that our small band of devoted believers in Christ here at Epiphany can make a profound impact in the world. Let us remain committed to being there for one another, for our broader community, and for those in need.

## VESTRY CANDIDATES



Beth Floyd



Kelli Gantt



Paul Hinson



Nick Theyerl

## RETURNING VESTRY MEMBERS



Carol Bartlett



Cody Chaffins



Kathy Corcoran



Cristin Davis



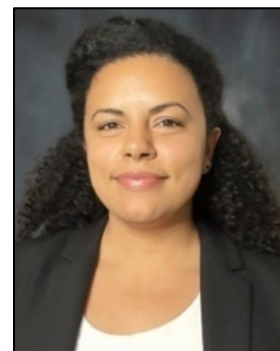
Jacob Geiger



Tracey Laird



Key Lee



Jordan Moody

## RETIRING VESTRY MEMBERS



Judy Jarady



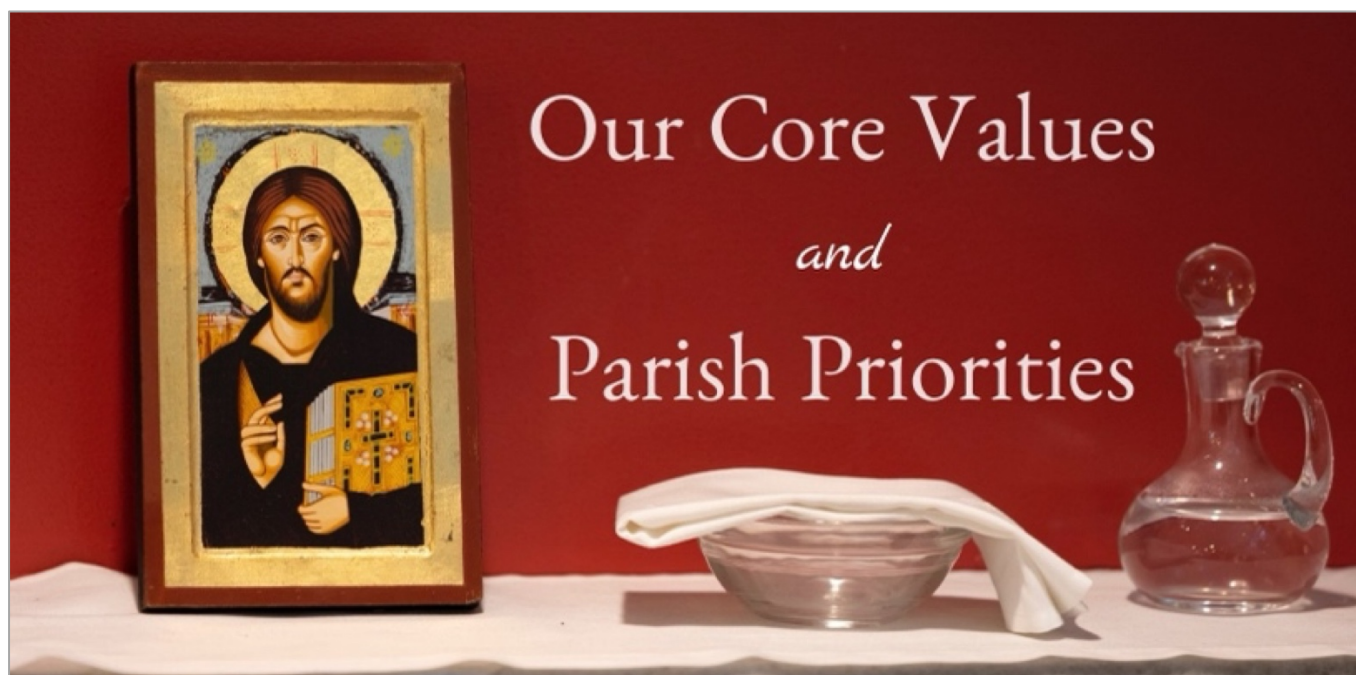
Matthew May



Andrea Strahan



Sally Walker



## CORE VALUES

**Faith in God.** Our belief in a loving God is foundational to our faith. Faith brings us together for worship and sends us out in the world. We recognize everyone's faith journey as unique—wherever you are on your journey, there is a place for you here.

**Love in Action.** We are called to engage with the wider community through the life and teachings of Jesus. Together, we work toward environmental, racial, gender, LGBTQ+ and economic justice and equity.

**Transformative Relationships.** Through God's grace, we seek to embody God's love in our care for each other.

**Intentional Welcome.** We are an inclusive community that strives to seek and serve Christ in all people. We believe God loves you—no exceptions.

## PARISH PRIORITIES

1. Make necessary changes to attract families with children and youth to our church.
2. Develop and implement a comprehensive strategy to reach new people and incorporate them into the life of the church.
3. Work toward environmental, racial, gender, LGBTQ+ and economic justice and equity.
4. Develop ministries that work toward healing those broken by life circumstances and those living on the margins of society.
5. Create more opportunities for people to form meaningful relationships (for example, small groups, nurtured friendships, shared meals, etc.).

## MISSION STATEMENT

The Episcopal Church of the Epiphany is an inclusive community called to seek and follow Jesus Christ. We welcome all people in the Eucharistic fellowship of Christ's Body. We receive strength and encouragement at the common table to carry out Christ's work of reconciliation in our broken world. Nourished by worship and witness, learning and teaching, fellowship, and service, we strive to live out the Gospel's radical values with gladness of heart.

## CORE VALUES

Kay Lee, Vestry Liaison

This new liaison position was tasked with reflecting on how our practices as a parish align with our Core Values.

Our Community Engagement Ministries' dedicated efforts toward Environmental and Racial Justice in the broader community exemplify their Faith in God and how to provide Intentional Welcome and develop Transformative Relationships.

### Environmental Justice examples:

An artist who creates art from reclaimed materials giving new life to what would otherwise be discarded. And a jewelry maker's work was "...to sustainably create using recycled, upcycled, and repurposed materials..."

The monthly feeding of Gateway Evolution Center residents included composting, recycling, and serving meals on environmentally friendly paper.

The Holy Comforter meal minimized landfill waste via food preparation methods.

At DEAM donated food bags "...makes a real difference".

Epiphany's Solar Panel Campaign, the tree plantings to offset our carbon footprint, composting, Sunday Creation Care Prayers, eliminating single use plastics, using LED bulbs and motion sensors, planting of native, pollinator and edible plant, on-line Sunday bulletins, a MLK Service Day energy efficient roof repair. "The Earth is sacred and alive. Caring for our Earth connects us to a deeper love of God."

### Racial Justice examples:

A Muslim artist/ photographer whose exhibit refers to Afghanistan's long history of war, lost culture, and little hope for the future. "It is about intentional welcome for others outside our faith and including international issues in hope of presenting greater understanding transformative relationships." A hosted disabled artist of the LGBT community, explained "These creations are not just handcrafted toys - they are symbols of resilience, community, and the power of creativity in the face of adversity...With each stitch, I hope to foster understanding and empathy, using my work as a vehicle to challenge misconceptions and inspire change."

The renamed "Feeding" Ministry acknowledges the relational (as opposed to service) aspect of the work. Residents are primarily minorities but all are marginalized. Epiphany volunteers talked with the residents, demonstrating respect and love and building generational bonds between adults and Epiphany's children. "It sends a message of 'We see you. You are not invisible'."

At Holy Comforter "[w]e are greeted by people we have seen for ages and are graciously thanked by many."

DEAM's food pantry and utility and prescription assistance support the marginalized including unhoused neighbors. VBS children's hygiene kits and cards provided connection.

The Earth Guild volunteered in Decatur's MLK Service Day as well as the Freeze Shelter at St. John's Lutheran Church.



## WORSHIP

### Acolytes

Acolytes—baptized persons from those in fourth grade and above, including adults—assist in worship and serve at the altar. If you would like to serve as an acolyte, please contact Cecilia & Tom Democko.

### Altar Guild

The Altar Guild works in teams to prepare the worship space for all Sunday and weekday services, baptisms, weddings and funerals, and purchase and care for vestments, linens and vessels. While this is a very practical and hands-on ministry, it also deepens and fosters an appreciation for our services, festivals and seasons. We acknowledge all of our faithful members, and welcome April Maa to the guild.

### AV Guild

The AV Guild spent another successful year broadcasting Epiphany worship and Epiphany events to our remote members from all over the country through the powers of technology. The AV Guild welcomes new members and looks forward to continuing the important work of keeping everyone connected, no matter how far physically they are from us. **Guild Members:** David Brandon, Paul Hinson, Tracy Laird, April Maa, Chris Miller, Meg Shearon, and Emily Thompson.

### Baptismal Banners

The making and gifting of individual Baptismal Banners is a ministry of the church. The banners—sembled with felt, fabric and ribbon—are prepared by hand for each child under the age of 12 and are displayed during the liturgy. After the ceremony, the banner is given to the family as a remembrance of this special time.



### Eucharistic Ministers & Lay Readers

Thanks to all the members of the parish who give of their time to serve as Eucharistic Ministers and Readers. And thanks also to our parish clergy and staff, particularly parish administrator, Shea McNutt, for handling the scheduling. We could still use a few more EMs. We welcome any parishioners interested in joining this ministry. Contact Martha Rummel if interested.

### Flower Guild

I am grateful to this wonderful guild for their continued dedication to this parish. We are a band of 8 but we are fortunate to have three new parishioners who have agreed to serve with us after a period of training; Mary Ann Schneider, Laraine Fraijo-Paul and Ann Fowler. The Guild is funded by donations for Sunday arrangements in memory and in thanksgiving of loved ones and events. Please let us know if we can highlight your request with any special flowers. **Guild Members:** Polly Nodine (Chair), Cristin Davis (Co-Chair) Kim Boswell, Wallace Bryan, Lisa Daily, Jordan Moody, Vivien Sheehan, Annie Strahan.

### Vergers

The role of the verger is to support the clergy, and assist in the organization and preparation of Sunday services and other special services held in the church. We have a dedicated team of 8 people always prepared to serve as needed. We were happy to welcome Randy Shearin as a new verger to our group this year. If anyone has an interest in serving as a verger, please reach out to Susan Messner.

Ushers

As we closed out 2025, our Usher Ministry celebrates a year marked by service, growth, and a renewed commitment to hospitality. Week after week, you showed up with grace, patience, and genuine warmth—helping create a worship environment where every person felt seen, welcomed, and cared for. Your presence at the doors, in the aisles, and behind the scenes made a meaningful difference in the life of our church.

Our team faithfully supported every Sunday service, special liturgy, funeral, wedding, and community event with professionalism and compassion. Ushers stepped up during high-attendance services ensuring smooth seating, accessibility support, and a peaceful worship experience for all who entered our doors.

One of the greatest blessings of 2025 was welcoming new members into our ministry family. We are grateful for the fresh energy, kindness, and willingness to serve that each new usher brings. A warm and heartfelt welcome to: Carol and Zander Brietzke, Laraine Fraijo-Paul, Austin Stephenson, Stephen Gurly, and Nathan and Audrey Thompson.

To every usher—thank you for your dedication, your patience, your smiles, and your steady presence. You help set the tone for worship long before the first hymn is sung. Your ministry matters deeply, and it is noticed.

May 2026 bring continued unity, joy, and purpose as we serve God and our church community together. If you would like information about joining the ushers, contact Jarrod Moody.

MEMBERSHIP

Page-Love Smith & Liefy Smith, co-chairs; Cristin Davis Vestry Liaison

In our call to continue to sustain the **Invite | Welcome | Connect** campaign in our parish, our committee did the following work in 2025:

We greeted members and new faces every Sunday at the doors to the outer narthex. The visitor welcome extends to offering name tags, giving welcome bags, showing families with children the nursery, and offering a brochure “Introduction to the Episcopal Church” if we discover they are from another faith tradition. We estimate close to 40 welcome bags were given to visitors and about the same number of follow-up welcome emails were sent from pew cards collected.

We hosted two Newcomer Gatherings in the Spring and Fall. In the Spring, 17 households were invited (31 people) and in the Fall, 12 households (22 people) were invited.

When newcomers become official members by transferring their membership or initiating an annual pledge, committee members acknowledged that by delivering a “New Member” gift bag to their home. It includes welcome letters and Epiphany coffee mugs.

At last count for the year, we had a total of 14 new members.

Our committee members include Annie Strahan, Susan Messner, Susan Moody, Paul Hinson, Marion Curry, Tom Democko, Judy Jarady, Bethany Gaige, Sharon O’Flaherty, Pam Tipton, Page Love Smith, and Liefy Smith.

We welcome parishioners to serve on the Membership Committee.

Membership By Numbers			
Active Members	410	Baptisms	2
Others Active	203	Confirmations	10
Total	613	Marriage	2
		Deaths	8
Households	309	Transfers In	14
Children	87	Transfers Out	3

## CHILDREN & YOUTH MINISTRIES

*Taylor Irwin, Director of Children & Youth Ministries*

### Children's Ministries

In 2025, Epiphany's Children's Ministry focused on creating meaningful opportunities for relationship-building and shared worship rooted in our Episcopal tradition.

On Sundays, we offered nursery care for our youngest members, Children's Chapel during the service, and two Godly Play formation classes. Children also participated in choirs, service projects, and our monthly Family Eucharist, which brings worship and fellowship together for all ages.

Throughout the year, we hosted a variety of special events, including the Epiphany Pageant, the Easter Egg Hunt, potlucks for families with young children, and Advent cookie baking and decorating. These gatherings provided joyful, welcoming spaces for families to connect with one another and with the life of the parish.

Our Vacation Bible School was a collaborative effort with Holy Trinity, St. Bartholomew's, St. Luke's, and St. Martin in the Fields. More than 60 children participated in Compassion Camp: Be Loved, Be Kind, Be You. This partnership modeled a cooperative approach to ministry and reflected our shared commitment to community and inclusion. Building on this success, we will collaborate with Holy Trinity and St Luke's to offer a new "One-Day Fun Day" VBS model this summer. This approach emphasizes family involvement in faith formation while providing a more sustainable structure for volunteers and staff.

Epiphany's Children's Ministry is currently supported by nine volunteers who serve in Sunday-morning programs. In 2025, we were encouraged to see an increase in volunteer participation; we are deeply grateful to the parishioners who invest their time, creativity, and care in nurturing the spiritual lives of our children.



## Youth Ministries

In 2025, Epiphany's Youth Ministry provided a space for middle and high school youth to explore themes of Episcopal identity, belonging, and wellness.

Volunteers offered weekly Sunday-morning formation for youth in grades 6–12. These sessions included a semester-long exploration of Episcopal identity that served as preparation for confirmation for four youth confirmed in March 2025. In the fall, youth engaged with the curriculum *Living Compass: Total Faith and Wellness*, learning about the integration of spiritual life with personal health.

Our Youth Group themes for the year were community, recreation, and service. Youth served quarterly at Church of the Common Ground serving as readers and greeters and participating in worship. They also contributed to parish life by preparing pancakes for Shrove Tuesday, serving a Gateway Meal, and serving as vergers, ushers, and lay eucharistic ministers during Youth Sunday.

In July, ten youth from Epiphany and Holy Trinity Parish journeyed to Sewanee, Tennessee. They learned to pray the daily office, participated in prayer and service with the Sisters of St. Mary's, and learned about what it means to claim faith as our own. We continue to partner with Holy Trinity for monthly meals and events.

In the fall, youth participated in an interfaith river cleanup, played hide-and-seek at a lock-in, and learned about various lay ministries in our community. We are grateful to all who accompany our youth as they learn more about their faith and how to live that out in the world around them.



## ADULT FORMATION REPORT

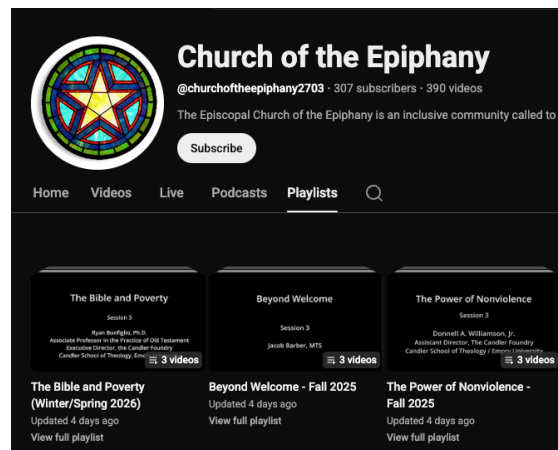
Paul Hinson, Chair and the Rev. Carmie McDonald

In 2025, Epiphany's Sunday Adult Formation offered a rich variety of courses designed to explore how our Christian faith calls us to model Christ's love, justice, and compassion in the world.

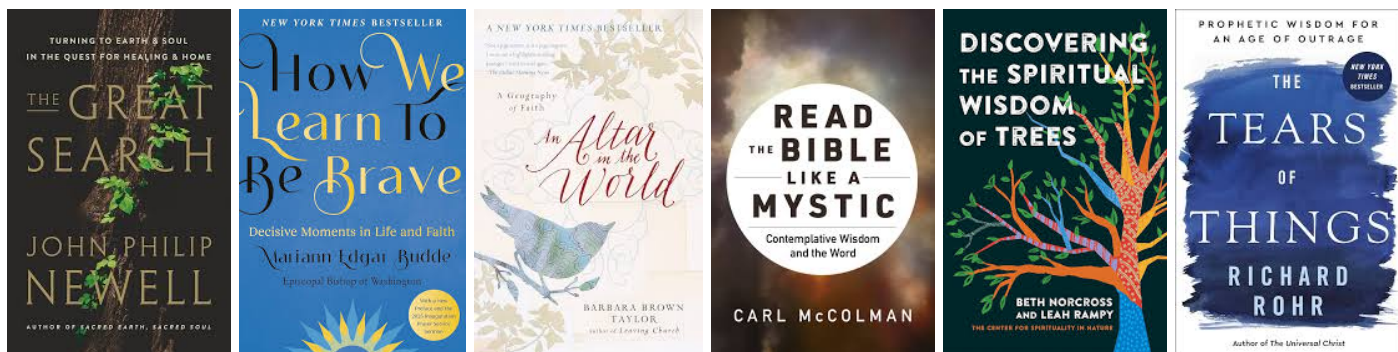
Throughout the year, parishioners engaged in theological reflection, spiritual practice, and faithful responses to contemporary issues. Courses included *Returning to Our Roots*, led by Rev. Amy Dills-Wright and Rev. Carmie McDonald, and *Seeking Shalom* with Dr. Ryan Bonfiglio of the Candler Foundry, which explored the biblical vision of wholeness and justice across spiritual, social, and economic dimensions. *Welcoming the Stranger*, led by Alix Janke, Peter Habib, and Anton Flores-Maisonet, examined migration in America and our Christian ethical response, while *Beyond Welcome* led by Jacob Barber engaged Karen Gonzalez's work on immigrant justice.

Additional offerings included *The Power of Nonviolence* with Donnell Williams, exploring the role of nonviolence in building the Beloved Community; *Advent Gifts of the Magi* with Ann Fowler, a cultural and artistic exploration of the Magi story; and *Staying Centered through Spiritual Practice*, led by Rev. Amy Dills-Wright and Rev. Carmie McDonald.

Most of these offerings were recorded on video and uploaded to our YouTube channel where over the years we've developed an extensive library of rich material. You can find the link to our YouTube Page on our homepage.



Our Contemplative Book Group, led by Rev. Amy Dills-Wright, Paul Hinson, and Suzanne Yoder, read and engaged in thoughtful discussion of six spiritually formative works: *The Great Search* by John Philip Newell; *How We Learn to Be Brave* by Mariann Budde; *An Altar in the World* by Barbara Brown Taylor; *Read the Bible Like a Mystic* by Carl McColman; *Discovering the Spiritual Wisdom of Trees* by Beth Norcross and Leah Rampy; and *The Tears of Things* by Richard Rohr.



Finally, Epiphany launched an inaugural Summer Film Series featuring *Black Panther*, *Conclave*, and *Shrek*, intentionally fostering intergenerational connection and shared reflection.

Together, these offerings provided parishioners with ongoing opportunities for connection and community building, strengthened our formation, deepened our faith, and equipped us to live more fully into our baptismal promises.

## BUILDINGS & GROUNDS

*Matthew May, Vestry Liaison*

One thing is certain AI is not replacing our volunteers! In fact our Work Days continue to inspire the next generation of volunteers.

Solar panels was the biggest accomplishment and after three years of planning, we are generating our own energy.

Special thanks to Jason Sullivan for lightening the load on all the volunteers that keep our grounds in shape.

Also mark your calendars and come join us to spruce up at the church Work Day before Easter.



## Memorial Garden Guild

The Memorial Garden Guild was formed in 2011. Its purpose is to promote and care for this holy portion of our grounds as a sacred space for meditation and remembering the dead. Members of the parish, former members, or members of their families may be interred. The names of individuals whose ashes are interred in the Garden are listed on a commemorative wall plaque in the Garden. In this past year, four more interments took place, bringing the total number of burials in the Garden to 92 since its creation in 1988. The two Lytch gates are showing signs of deterioration, especially the one closest to Ponce de Leon Ave. They will require some restoration, perhaps replacement, in the coming year. Parishioners are encouraged to volunteer to help with the continuing maintenance of the Memorial Garden. The time commitment for the Guild varies by the season. If you would like to join this guild, contact either Bill Graves, or Sabra Hanson.

## MUSIC & LITURGY

*Julie Ryder, Organist & Choirmaster*

Our musical and liturgical year was joy-filled and full of old favorites and new challenges as our choirs, ensembles, and soloists helped bring deeper meaning to our weekly worship.

### January-June

The **Epiphany Choir** grew (musically and in membership), learning new music and reviving works from years ago. After a busy Advent and Christmas in 2024, we started 2025 on our Feast Day, welcoming the Kings during the Epiphany pageant. A day-long retreat hosted by Sheila and Richard Ferrell enabled us to better prepare for Lent, Holy Week, Easter and Pentecost and gave us time to enjoy each other's company in a different setting. In addition to our Sunday liturgies, the Epiphany Choir sang for the funeral of Eric Olsen, 2 services on Ash Wednesday, as well as on Maundy Thursday and Good Friday leading to a glorious Easter morning accompanied by strings, organ, and the **Epiphany Ringers**. Both ensembles stretched the "season" into June singing and ringing for the last time on Pentecost, June 8, and enjoying a celebratory meal together before the summer hiatus. The **Hildegard Ensemble** sang the *Exsultet*, led hymns, psalms, and service music to

enrich our Easter Vigil in the pre-dawn hours of Easter. Our **Junior Choir** and **Beginning Choristers** sang during the Epiphany pageant, in February and again on Palm Sunday and Youth Sunday with the help of music assistant, **Edie Brush**.

## Summer

From mid-June through August, many members of the choir continued to sing on Sundays as part of the **Epiphany Summer Choir**, joined by other Epiphanyites who sing on a part-time basis. During these weeks, planning for the 2025-26 program year got underway, and the Epiphany Choir reassembled early in August to sing for the funeral of Francis Lee.

## September-December

The Epiphany Choir prepared music for Sunday liturgies during the Season of Creation, for All Saints and All Souls Choral Evensong, sang for the funeral of John Keys, and had a busier than ever Advent with Advent Lessons & Carols on the evening of December 7, and serving as the only choir for the Diocesan Diaconal Ordination on December 13 at the Cathedral of St. Philip. On the 4<sup>th</sup> Sunday of Advent, the Epiphany Choir was honored to host a birthday party to celebrate the 90<sup>th</sup> birthday of Bill Graves. The Epiphany Ringers, Hildegard Ensemble and the Junior Choir and Beginning Choristers also sang for Lessons & Carols, and all of our choirs and ensembles sang, rang, or played during one or both of our Christmas Eve liturgies. Of special note was the pre-service performance of “Gesu Bambino” with strings and trumpeter **Riley Davis** and of Ralph Vaughan Williams’ “Fantasia on Christmas Carols” with choir, strings, organ, and soloist **Patrick Bryant**.



## The Bach/Biber Project

Violinist **Judith Cox** and organist **Julie Ryder** continued the Bach/Biber Project in March and October, the fourth and fifth of the six presentations; we repeated the fourth presentation at the “Music in the Mountains” concert series at Big Canoe Chapel in Jasper. During this three-year journey, we are exploring the profoundly spiritual music of two well-known composers, Johann Sebastian Bach and Heinrich Ignaz Franz Biber, whose gifts continue to resonate across the centuries. These offerings consist of performances of Bach’s solo violin works, Biber’s Rosary Sonatas (based around the Joyful, Sorrowful, and Glorious Mysteries of the Rosary), readings, poetry, and meditation. The final presentation will take place here at Epiphany on April 26, 2026.

## COMMUNITY ENGAGEMENT

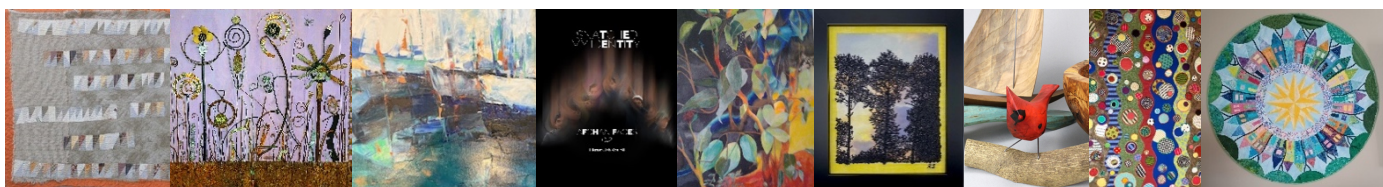
*Tracey Laird and Kathy Corcoran, Vestry Liaisons, and the Rev. Carmie McDonald*

At the Episcopal Church of the Epiphany, we endeavor to live out our faith as expressed in the Baptismal Covenant: “to strive for justice and peace among all people and respect the dignity of every human being.” Our Community Engagement Ministries provide opportunities to manifest God’s love for all the world through friendship and service to others. In 2025, we continued our commitment to established ministries while embracing new partnerships. Changes within some partner organizations invited us to reflect on how we can most faithfully serve our neighbors in need. As Epiphany looks toward 2026, any changes in how we serve and engage the broader community will be undertaken with prayerful discernment.

### Art Ministry

The Art Ministry is a quiet and colorful ministry that graces the walls of the entrance foyer bringing delightful attention to and the showcasing of local artists. Twenty years strong, this ministry is a vital part of Community Engagement connecting the passion and skill of an artist’s craft and giving them exposure and opportunity to celebrate and share their work with our community.

The supportive and receptive environment Epiphany gives the artists is a vital component of the monthly shows. Most are deeply moved by seeing the body of their work professionally displayed like our first artist of the year, Michele Hiskey. She displayed wonderful quilts- one of which had many found objects and that was inspired by her grandmother’s scrap collecting. Carol Veliotis exhibited and sold an amazing variety of work made from recycled and found objects. In April, Brenda Bostain shared her vibrant oil paintings. Stunning photography portraits of Afghans was brought to us in May by Hikmat Photography (Hikmatoulla Kharoti). Gail Parnelle kicked off the fall exhibitions with her delicate botanical drawings and saturated abstracts. In September, Roxanne Brown brought her exquisite intimate landscapes in fiber and fabric which were very popular. Jack Barnes arrived in October with his clever birds and bowls made from found wood like downed trees. November provided the biggest and most successful exhibit by two Alabama Quilters Charlotte Nix and Beth Milis. From large to small their beautiful and functional items included quilts, notebook covers, bags, bowls and Christmas ornaments.



The variety of work created by our artists added a happy vitality to our parishioners’ experience. Epiphany benefits by earning 25% of all sales which is used for various purposes. Our artists sold over \$9,000 of art and the gifted 25% was over \$2000.00. The proceeds from the art sales in 2025 will go toward interior improvements approved by our rector. We would like to thank the Parish for the generous support in purchasing the wonderful art objects and supporting these creatives! If you would like to join our ministry or nominate an artist for an exhibit, please contact Liefy Smith or Page Love Smith.

### Decatur-area Emergency Assistance Ministry (DEAM)

DEAM is into its fifth decade assisting people in need with food and utility and prescription help—and Epiphany has been an active participant since the beginning. In 2025 DEAM distributed more than 155,000 lbs. of food during more than 2,500 pantry visits by clients. Many thanks to all the people of Epiphany who have contributed food during our twice-a-year DEAM pantry drives and to the entire parish for its generous financial support. New volunteers for this ministry are always welcome and needed. Contact Doug Runnion if you would like to help.



## Haiti Partnership

The context of Epiphany's Haiti Ministry changed in 2025 following our partner Kesner Ajax's call to serve as priest-in-charge at Holy Cross Anglican School in San Pedro, Belize. In light of that change and our desire to assist those most in need in Haiti and around the world, Epiphany expanded our support through Episcopal Relief & Development (ERD) whose global network helps to advance lasting change in communities affected by injustice, poverty, disaster and climate change. Visit [episcopalrelief.org](http://episcopalrelief.org) to learn more about ERD.

## Meal Ministry

Epiphany's Meal Ministry is dedicated to serving meals to those in need at two primary locations in Atlanta: the Gateway Center and Holy Comforter Episcopal Church.

## Holy Comforter Episcopal Church

Approximately 60% of the Holy Comforter congregation lives with mental illness, and all members are active participants in the community's life. Each Wednesday evening, the church hosts a worship service followed by a community dinner, fostering fellowship and inclusion. Epiphany supports this mission by providing these Wednesday dinners on a quarterly basis. If you are interested in volunteering or assisting with these quarterly meals, please contact Jeanette Hanson for further information.

## Atlanta Gateway Center

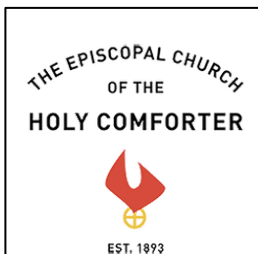
The Atlanta Gateway Center's mission is to connect people experiencing homelessness with the support necessary to become self-sufficient and find a permanent home. For many years, Epiphany provided dinner on the second Friday of each month at Gateway's Evolution Center, a 100-bed shelter for men in transition. However, in October, the Evolution Center closed, and its residents were relocated to their main facility in downtown Atlanta, which accommodates 400 men.

This consolidation has enabled Gateway to offer comprehensive services to all the men they assist at a single location. Epiphany now serves meals at the downtown location. Epiphany once again provided Christmas gift bags to the residents with items such as toiletries, snacks, laundry pods, notepads and underwear and a Christmas card personalized by Epiphany's children and youth. If you are interested in participating or learning more, contact Sally Walker or Marion Curry.

## Refugee Ministry

The refugee ministry remained active in 2025, albeit with a shift in focus. Highlights include several meaningful listening sessions in late winter/spring to discern the future of the ministry and ways our parish can show up in this time. In early summer, we offered a 3-part formation series called *Welcoming the Stranger* led by Peter Habib and Alix Janke exploring the history, terminology, and current context of migration in America, and in November Jacob Barber led a formation series exploring how our Christian faith informs a practice committed to immigrant justice, using themes from the book *Beyond Welcome* by Karen González.

Support for the Khil family has continued throughout the year, including a gift card drive at the end of summer to support the family with purchasing needed back to school gear. Epiphany formed a new partnership with Inspiritus, a local nonprofit working with refugees, immigrants, and other newcomers, and we continue to discern the desires and will of the parish and how we will be God's witness and God's presence to newcomers in these unprecedented times.



## PARISH LIFE

*Polly Nodine, Committee Chair*

The Parish Life Committee is a busy group. We start our year of events with the Epiphany Feast held after the pageant. Other events throughout the year are Agape Supper, Easter Vigil, Easter Breakfast, Parish Picnic, Welcome Back Luncheon, Oktoberfest, Nativities Exhibit, and ending with the Lessons and Carols reception. There are other receptions and cooking classes offered as well. We delight in providing the parish opportunities of fellowship through the sharing food and good times. Please let us know of any suggestions or comments on our events and for ideas on gathering together. I am grateful to my wonderful committee and our Vestry Liaison, Judy Jarady, for all their dedicated work throughout the year.

Committee Members: Polly Nodine (Chair), Edward Bauer, Michael Bryan, Patrick Bryant, Andrea Carpenter, Joel Fowler, Sabra Hanson, Patricia Price, Charlie Slater, Holly Slater, David Thierry, Pam Tipton, Sally Walker

## Annual Parish Retreat

Epiphany's Annual Parish Retreat returned to The Mountain in Highlands, North Carolina, for the third consecutive year. Our 2025 Retreat Committee—Ellyn Bryan, David Draper, Ann Fowler, Jamie Hare, Holly and Charlie Slater, Ann Williamson, and John Yntema—crafted a weekend filled with meaningful activities and joyful fellowship for our parish community.

Fifty-one children, youth, and adults took part in a wide range of activities, including s'mores and singing around the fire, games and puzzles, hiking, and our beloved annual ping-pong tournament and trivia night. The Rev. Amy Dills Wright and the Rev. Carmie McDonald guided worship and reflection sessions centered on Celtic Christianity and our deep connection to God's sacred creation. Outdoor activities for our children and youth were led by Taylor Irwin and Edie Brush.

We are already looking forward to returning to The Mountain in September 2026 and hope you will make plans to join us!



## PARISH GROUPS

### Men's Breakfast Group

The Men's Breakfast Group meets for a short worship service at 7:00 a.m. each Tuesday in the nave. The usual service is morning prayer, which the men take turns leading. Holy Eucharist is celebrated on first Tuesdays. Following the service, we have a simple breakfast which the men take turns bringing. Along with eating, they have a wide-ranging supportive conversation. They talk about religion (of course), but also sports, politics, the environment, current events, and what's going on in their lives. If you are interested in joining the group, contact Dave Thompson.

### Epiphany Book Group

The Epiphany Book Group meets 10 times throughout the year discussing 9 books. Our books cover all genres—autobiography/biography; history & politics/historical fiction; mystery; classics/new authors; you name it, we will probably read it! We meet the second Monday of each month (except July and August) either at Epiphany or on Zoom. (Church during Daylight Saving Time and Zoom during Standard Time). Each December we gather for appetizers, desserts, and fellowship (and our members can cook and bake)! This past December,

long-time group member Jeff McGrath (and his wife, Wallace) graciously opened their home, again, for our get together—they have already offered for December 2026.

### Fireside Sit & Sip

Formed in September 2024 for women primarily in their 40s, 50s, and 60s, this group gathers each month around a fire to sit, sip, and enjoy meaningful conversation with other women on the journey of faith. In warmer months, it takes place around the fire pit in the Epiphany Courtyard. In colder weather, it takes place indoors.



### Episcopal Church Women (ECW)

ECW continued “our work in mission and in ministry...” within the parish and community.

#### Some accomplishments:

Prepared 2,700 sandwiches for distribution at Emmaus House

Held Bake, Craft and Book Sales to fund outreach

Donated money to Food Pantries

Hosted Christmas luncheon for Emmaus House seniors

Facilitated and supported two funeral receptions

Monthly cards to parishioners unable to attend church

Hosted outreach speakers

Please join us on second Tuesdays for all or any of our activities: making sandwiches, meeting, lunch out. For more information, contact Kathleen Rinehart.



## Social Justice Action Group

A new Social Justice Action Group (SJAG) grew this year from conversations among church members following Loren Williams' presentation about the work of the Episcopal Church Office of Government Relations. As Christians, as Episcopalians, and as Epiphanites specifically, respect for the dignity of every human being and stewardship of our planet are core to our faith and SJAG has engaged with efforts promoting these values and encouraging leaders to incorporate them in public policy.

SJAG members' efforts align with the longstanding work of Epiphanites in advancing racial and environmental justice, with a shared focus on information-sharing and collective action. Activities among group members have included writing postcards to voters in important elections, participating in an ATL-wide vigil for democracy along Ponce, and engaging in civil liberties day at the state Capitol for the current legislative session. [Look for more on this effort in the next Community Engagement Quarterly in February.] The group invites interested Epiphanites to join via Realm, to specify within Realm your preferences for email and/or text notifications of postings, and to use the comments feature to coordinate carpools or other logistical needs. [Need help or coaching about using the Realm app? Look for a table in the next few weeks, or ask Tracey Laird, Page Love Smith, or Suzanne Yoder.]

## PASTORAL CARE

*David Draper, Committee Chair*

The primary task of the Pastoral Care Committee is to work with and support the pastoral ministry of the clergy by reaching out to parishioners with cards, prayers, visits, and other appropriate assistance. Committee Members: David Draper (Chair), Judy Jarady (Vestry Liaison), Rick Day, Cecilia Democko, Tom Democko, Jarrod Moody, Susan Moody, Mary Ann Schneider, Nancy Thompson, and Sherry Wallace.

## Caregiver Support & Grief Group

Epiphany has two support groups in which people gather to share their experiences and support one another. The Caregivers' Group is for parish members who are caring for a loved one, or who are anticipating caring for a loved one. The Grief Group is for people who have lost a loved one, or who are anticipating the loss of a loved one. Both are led by Nancy Thompson, a Georgia-licensed psychologist.

The Caregivers' Support Group met monthly on the second Friday of each month. Over the course of the year, 8 people participated and two facilitators; one of the facilitators withdrew during the year after moving away. Among the participants, one was a longtime member of Epiphany who now lives out of state, and one does not

## Trivia Group

This group is open to trivia lovers of all ages and meets on Tuesday nights at 7:00 p.m. at Wild Heaven in Avondale Estates. In the summer, when the choir is not rehearsing, the group meets on Wednesdays, also at 7:00, at Universal Joint in Oakhurst.

## Young Adults Group

The Young Adults group welcomes all parishioners in their 20s and 30s to join in its monthly gatherings. These meetings are usually on the second Sunday evening of each month, though some vary if we're doing an outing. We typically enjoy a meal together and close with compline. In 2026 the group looks forward to deepening its engagement with other ministries of the church.



attend Epiphany but attends the group with a neighbor who does. This year's participants were providing care for spouses, parents, and friends.

The Grief Group met monthly on the first Thursday of the month. Over the course of the year, 18 people attended, with average participation between 10 and 12. There were also two facilitators in attendance, but one withdrew after moving away. Two participants live in states other than Georgia. Participants' losses include spouses, children, parents, siblings, close relatives and close friends.

Together with Pastoral Care and Community of Hope, we held our fourth Service of Light (formerly Longest Night Service), on December 21. Participants in the service, both in-person and virtual, included members of the Grief Group as well as other members and friends of the parish.

## Community of Hope/Circle of Care

Grounded in the Benedictine tradition of prayer, community, and service, Community of Hope International equips laypeople to offer various forms of pastoral care. Caregivers are taught to be fully present, listening with compassion, humility, and respect, without trying to fix or control. Through this attentive presence, caregivers offer a compassionate, faith-based presence and respond to the spiritual needs of individuals and groups.

In October, Lucy Davidson, Larry Wilcox, and Suzanne Yoder completed the 14-week Community of Hope training. They joined the first two cohorts of caregivers—Barbara Belcore, Jessica Burns, Lalor Cadley, David Draper, Ann Fowler, Laura Gary, Paul Hinson, Carol Moser, Chris Miller, Nan Ross, Annie Strahan, Nick Theyerl, and Nancy Thompson—to offer pastoral support to the parish and wider community. Facilitators: Ann Fowler and Lalor Cadley. All COHI members gather monthly for continued formation through learning, prayer, and reflection.

## 2025 Highlights

- Provided extensive pastoral outreach, including 220 pastoral visits, 57 Eucharistic visits, 198 phone calls, 262 conversations at church, 43 healing-station services, 187 cards, texts, and emails, 102 community outreach encounters, and 24 rides to church or healthcare facilities.
- Continued Faith Matters, an oral history project, with interviews of Bill and Pat Graves (51-year members) and Ruth Olson (38-year member).
- Hosted a dinner and provided support following the All Souls' Service.
- Sponsored "Letting Go Into the Mystery, a contemplative workshop on conscious dying," led by Susan Patterson, a Conscious Dying Coach.

- Assembled blessing bags for Church of the Common Ground, containing toiletries, gloves, thermal socks, prayers, cards, pens, and stamps.
- Assisted with The Service of Light / Longest Night, supporting those experiencing grief during the holiday season.



# ENDOWMENTS

Jacob Geiger, Vestry Liaison

## New Enduring Light Operating Endowment Established

This summer the Vestry, acting on the recommendation of the Finance Committee, established the Enduring Light Operating Endowment. The initial principal of approximately \$200,000 comes from several sources: a significant tax credit from the Employee Retention Credit, which supported nonprofits that continued to pay all staff members during the pandemic; a portion of our budget surpluses from 2023 and 2024; the bequest of a parishioner who died in 2024; and gifts from individual members.

This new Endowment is designed to support Epiphany’s budget, and therefore support its ministries. Each year the budget will receive 5 percent of the average value of the endowment over the past three years. In 2026 and 2027 the budget will receive partial transfers of approximately \$3,000 and \$6,500, because the calculation of average value includes years when the Endowment did not yet exist. The Endowment will be fully operational in 2028, generating roughly \$10,000 a year for the budget at its current market value. It is the Vestry’s intention to put the bulk of any realized bequests (gifts made to the church when people die) into this endowment so that over time, through new gifts and the growth of the financial markets, the Enduring Light Endowment can provide the resources needed to sustain, or even grow, the work of our ministries at Epiphany.

If you have any questions about the Enduring Light Endowment or how you can support this new fund, please speak to Vestry Member and Endowment Committee Liaison Jacob Geiger.

## The Epiphany Endowment Grant

Karla Finnegan, Chair

The Epiphany Endowment Grant was established in 2000 and may be distributed for the following areas:

- A. Capital improvements, debt reduction, or the building program of the Church of the Epiphany, Inc.
- B. Scholarships or grants to members of the Church of the Epiphany, Inc. for the purpose of attending college, seminary, nursing, or medical school; for church-related camping or leadership conferences; or such other training which enables members of this congregation to grow in Christian faith and service to God’s people.
- C. Outreach into the community including, but not limited to, grants to Episcopal colleges and seminaries, social service agencies, institutions, and agencies to which this parish relates, and to special programs designed for those persons in our area who are in spiritual and/or economic need.
- D. Projects of the Episcopal Church at home and overseas.

McNeely Scholarship	\$1,500
Camp Mikell Retreat Village Campaign	\$9,871
<b>Total 2025 Distribution</b>	<b>\$11,371</b>



## The Magi Foundation

The Magi Foundation was created in 2002 and its purpose is to thank, recognize, and honor individuals who have made provisions for the Church in their will or by other means of planned gift, such as a life insurance policy or charitable remainder trust, as well as educating parishioners about methods and possibilities for planned giving and the ease and convenience of certain opportunities.

Those of you who have notified us that you have made provisions for the Church's Endowment Fund in your planned giving are members of the Magi Foundation. If you have listed us in your planned giving but have not let us know, we would love to include you in our listing of donors and in our biennial event for Magi Foundation members. The

enrollment form can be found at [epiphany.org/endowment-fund](http://epiphany.org/endowment-fund).

Your gift to the Epiphany Endowment Fund enables us to ensure the strength, continuation, and the potential expansion of our ministries. It is the ultimate demonstration of our stewardship commitment. Your planning now allows you to leave a legacy that enables the ministries of this church to continue into the future.

## Magi Foundation Members

Adams, Oz *	Hamilton, John	Robish, Greg
Bender, Bert	Healy, Ruth*	Robish, Vanessa
Bolton, Phil	Hogue, Carol	Runnion, Doug
Bolton, Vicki*	Hogue, Lynn	Ryder, Julie
Cartledge, Sam*	Holloway, Elizabeth*	Sill, Nancie*
Cunningham, Alice*	Johnson, Doug*	Smith, Karyn
Cushing, Sara	Jones, Claiborne	Smith, Page Love
Daily, Lisa	Kerner, Anne	Smith, Stephen
Democko, Cecilia	Lawrence, Terri	Swenson, Dale
Democko, Tom	Lee, Kay	Swenson, Karen
Draper, David	Levine, Robin	Thompson, Nancy
Ford, Mary Betty*	Lloyd, Brenda	Timberlake, Margo
Fowler, Ann	Maclachlan, Bruce	Walton, Betty*
Fowler, Joel	Maclachlan, Gretchen	Weaver, Bill*
Geiger, Jacob	McNutt, L. Shea	Wollison, Sarah Jane*
Graves, Bill	Parker, Floyd*	
Graves, Pat	Rabb, Jim	
Hall, Pam	Redfern, Neva*	

*\*deceased*

## The Harvey Fund

The Harvey Fund, administered by ECW, was created to help individuals and families meet their basic needs and achieve their potential for self-sufficiency. The distribution for 2025 was \$22,500. We received seven applications. After a multi-level review process, grants were awarded to: A Home for Everyone, Nicholas House, Jumpstart Automotive Training Center, Our House, Emmaus House, Gateway and Hagar's House.

## STEWARDSHIP

*Pam Tipton, Chair*

Through the 2026 Stewardship Campaign—**Seeking Shalom**—you have once again shown your enduring love and commitment to our mission and values by achieving our Stewardship goal! Thank you!

**Goal:** \$760,000

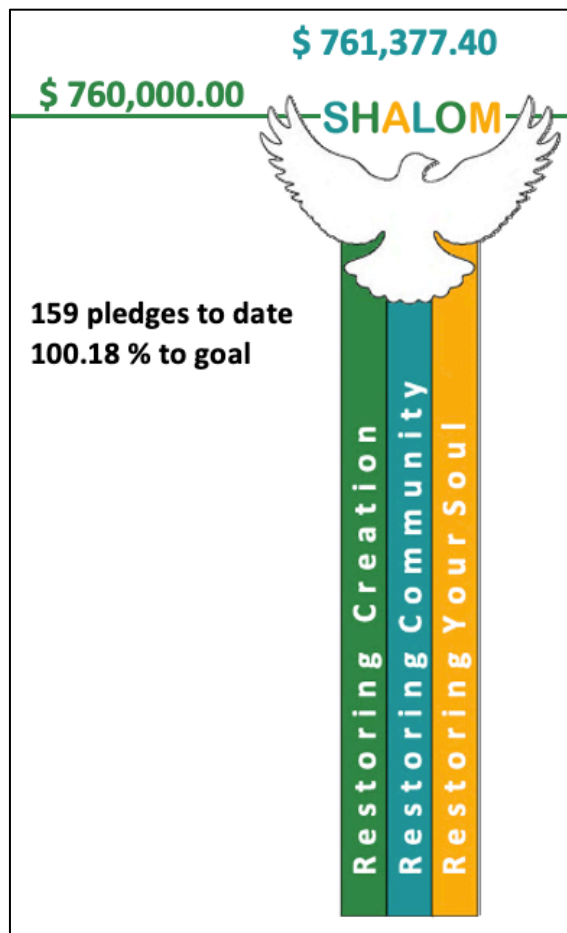
Amount Pledged to Date: \$761,377.40

A special note of thanks to those who shared their stories during the campaign, reminding us what a special community we have at Epiphany: Sally Walker, Scott Sheehan, Nick Theyerl and Brent Henderson. Thank you!

From the ministry team to the parish: may God richly bless each of you—your hands with labors of love, your heart of service and care, your mind and intellect shaping our understanding, and your gifts of treasure as we continue to **Seek Shalom** together as a community of faith.

**With gratitude, your Stewardship Ministry team:** Pam Tipton (Chair), Marion Curry (Ministry Fair Chair), Jacob Geiger (Vestry Liaison), Edward Bauer, Carol & Zander Brietzke, Mike Curry, Brent Henderson, Laura Keys, and Nick Theyerl.

P.S. Let us know if you'd like to join in on the campaign fun this fall!



## FINANCES

*Phillip Anderson, Chair*

Epiphany had a very good 2025 year financially. We ended the year with a surplus of over \$48,000 based on revenues of \$854,502 and expenses of \$805,780. Our surplus is due to revenues \$35,000 over projections and expenses \$13,000 under projections. The Vestry will be deciding how to allocate the surplus. This year we set up our new Enduring Light Endowment and we were able to set aside additional monies to rebuild our Capital Reserve Fund. This positive report is made possible by your generosity. Thank you.

The Finance Committee's members are Sally Walker, Randy Shearin, Shelle Bryant, Jacob Geiger, Andrea Strahan, Amy Dills-Wright, Susie Boyko, and Philip Anderson.

## STATEMENT OF FINANCIAL ACTIVITY

	2025 Budget	2025 Actual
<b>Revenues</b>		
Contributions—Pledge	730,528	737,981
Contributions—Non-Pledge	32,500	43,060
Other Income	41,750	58,358
Restricted Funds Released	0	0
Capital Campaign Funds Released	15,100	15,103
<b>Total Revenues</b>	<b>\$819,878</b>	<b>\$854,502</b>
<b>Expenses</b>		
Staff & General		
Clergy Salary & Benefits	240,259	245,363
Clergy Other	2,900	6,234
Lay Staff Salary & Benefits	234,462	242,884
Lay Staff Other	350	243
Office & Administration	48,450	48,283
Total Staff & General	\$531,320	\$541,007
Diocesan Pledge	67,068	67,068
Mortgage Payments	15,100	1,634
Buildings & Grounds	110,600	106,110
Capital Expenditures	46,640	46,640
Adult Education	750	999
Children & Youth	11,550	11,572
Music & Liturgy	4,700	5,210
Outreach	17,920	16,171
Parish Life	12,430	7,657
Stewardship	750	1,711
<b>Total Expenses</b>	<b>\$818,828</b>	<b>\$805,780</b>
<b>Surplus or &lt;Deficit&gt;</b>	<b>\$1,050</b>	<b>\$48,722</b>

<b>Episcopal Church Of The Epiphany Operating Budget 2025 / 2026</b>	<b>Approved Budget 2025</b>	<b>Actual YTD Results 2025</b>	<b>Proposed Budget 2026</b>	<b>Change over 25 Budget</b>
<b>Revenues</b>				
<b>Contributions - Operating Pledges</b>				
4000 - Pledges	\$737,928	\$737,928	\$746,021	1.10%
4010 - Last Year's Pledges + Cap Campaign		\$0		
4050 - Pledge Reserve	(\$7,400)	\$0	(\$7,500)	1.35%
<b>Total Contributions - Operating Pledges</b>	<b>\$730,528</b>	<b>\$737,928</b>	<b>\$738,521</b>	<b>1.09%</b>
<b>Contributions - Non-pledge</b>				
4100 - Member/Affiliate Non-pledge	\$25,000	\$23,149	\$25,000	0.00%
4110 - Plate Collections	\$7,500	\$9,353	\$7,500	0.00%
<b>Total Contributions - Non-pledge</b>	<b>\$32,500</b>	<b>\$32,501</b>	<b>\$32,500</b>	<b>0.00%</b>
<b>Other Income</b>				
4900 - Miscellaneous Revenue	\$0	\$438	\$0	#DIV/0!
4903 - Parish Life Events	\$6,000	\$2,899	\$6,000	0.00%
4910 - Facility Rental	\$32,000	\$41,176	\$32,000	0.00%
4960 - Processing Fees	\$3,750	\$3,606	\$3,500	-6.67%
<b>Total Other Income</b>	<b>\$41,750</b>	<b>\$61,206</b>	<b>\$49,300</b>	<b>18.08%</b>
<b>Restricted and Capital Funds Released</b>				
4945 - Capital Campaign 2016	\$15,100	\$15,104	\$15,100	0.00%
<b>Total Restricted and Capital Funds Released</b>	<b>\$15,100</b>	<b>\$15,104</b>	<b>\$15,100</b>	<b>0.00%</b>
<b>Total Revenues</b>	<b>\$819,878</b>	<b>\$846,740</b>	<b>\$835,421</b>	<b>1.90%</b>
<b>Expenses -- (Note: ++ = Funds from "Restricted Accounts" supplements expense categories with "+")</b>				
<b>Staff &amp; General</b>				
Total Clergy Salary & Benefits	\$240,158	\$247,023	\$249,319	3.81%
Total Clergy Discretionary & Other	\$7,900	\$2,904	\$7,900	0.00%
Total Lay Staff Salary & Benefits	\$234,462	\$239,995	\$244,916	4.46%
Total Lay Staff Other	\$350	\$307	\$350	0.00%
Total Office & Administration	\$48,450	\$41,499	\$50,300	3.82%
<b>Total Staff &amp; General (Office + Admin.)</b>	<b>\$531,320</b>	<b>\$531,728</b>	<b>\$552,785</b>	<b>4.04%</b>
<b>Total Diocesan Pledge</b>	<b>\$67,068</b>	<b>\$67,068</b>	<b>\$72,535</b>	<b>8.15%</b>
<b>Total Mortgage Payments</b>	<b>\$15,100</b>	<b>\$15,104</b>	<b>\$15,100</b>	<b>0.00%</b>
<b>Total Building &amp; Grounds</b>	<b>\$110,600</b>	<b>\$113,743</b>	<b>\$122,600</b>	<b>10.85%</b>
<b>Total Adult Education</b>	<b>\$750</b>	<b>\$740</b>	<b>\$1,750</b>	<b>133.33%</b>
<b>Total Children &amp; Youth</b>	<b>\$11,550</b>	<b>\$10,464</b>	<b>\$12,050</b>	<b>4.33%</b>
<b>Total Music &amp; Liturgy</b>	<b>\$4,700</b>	<b>\$6,318</b>	<b>\$5,200</b>	<b>10.64%</b>
<b>Total Community Engagement/Outreach</b>	<b>\$17,920</b>	<b>\$16,006</b>	<b>\$20,000</b>	<b>11.61%</b>
<b>Total Parish Life</b>	<b>\$12,430</b>	<b>\$3,809</b>	<b>\$13,200</b>	<b>6.19%</b>
<b>Total Stewardship</b>	<b>\$750</b>	<b>\$329</b>	<b>\$1,000</b>	<b>33.33%</b>
<b>Total Capital Campaign</b>	<b>\$0</b>		<b>\$0</b>	<b>#DIV/0!</b>
<b>Total Capital Reserve Expenditures</b>	<b>\$46,640</b>	<b>\$46,640</b>	<b>\$18,000</b>	<b>-61.41%</b>
<b>Total Expenses</b>	<b>\$818,828</b>	<b>\$765,307</b>	<b>\$834,220</b>	<b>1.88%</b>
<b>Surplus (Deficit)</b>	<b>\$1,050</b>	<b>\$81,433</b>	<b>\$1,201</b>	<b>14.35%</b>